

VISIT MERTHYR

Official
Visitor
Guide



Cyngor Bwrdeistref Sirol
MERTHYR TYDFIL
County Borough Council



WORLD CLASS ADVENTURES
RICH CULTURE AND HERITAGE
BREATHTAKING LANDSCAPE
DIVERSE RETAIL OFFER

VISIT MERTHYR

There's something about Merthyr

Whichever way you look at it, Merthyr Tydfil is full of surprises. Its beauty is self-evident, but delve a little deeper and you'll unearth tramloads of secrets.

It was once the most important town in Wales. Long before Cardiff became capital city and chief commercial centre, Merthyr Tydfil's pioneering mass iron production made it the hub of Welsh industry, a crucible of innovation and at the very forefront of Britain's industrial revolution.

We have a wealth of historical and cultural attractions: the magnificent Cyfarthfa Castle and Park, Parc Taff Bargoed nature reserve, museums, theatres, libraries, historic churches and chapels and incredible outdoor activity facilities – all leading to an all-round memorable visitor experience.

These include world class activity venues BikePark Wales, the UK's premier mountain bike destination; Rock UK Summit Centre, which features Wales's largest indoor climbing wall; and one of the leading residential multi-activity centres in the UK, Parkwood Outdoors Dolygaer.

These three alone are attracting more than 100,000 visitors every year. And who can blame them?

Each is set in the spectacular heart of the South Wales Valleys, in rolling hills and under craggy mountain peaks, alongside trees and lakes, rivers and reservoirs.

Home to numerous glorious hiking trails, a fifth of Merthyr Tydfil lies within the Brecon Beacons National Park – which is one of only seven Dark Sky Reserves in the world.

Round off your trip with shopping experiences to suit all tastes and pockets, a meal at a cosmopolitan range of restaurants and cafés and a drink in our bucking-the-trend increasing number of bars and pubs. Then turn in for the night in accommodation ranging from bunkhouses to manor houses, boutique hotels to country retreats.

Today's Merthyr Tydfil is unbelievably well-connected. Its location is one of its many strengths: at the crossroads of Wales's major transport routes – the A470 South to North Wales trunk road and the A465, the main artery linking Swansea to the Midlands, it's the perfect base to explore a myriad easy to reach destinations, including the South Wales Valleys, the Brecon Beacons, the Gower peninsula and Cardiff.

A trip to the modern Merthyr Tydfil will live long in the memory.

Front Cover Image: © Andy Lloyd

VISIT MERTHYR

Contents

There's something about Merthyr	2 - 3
Top Picks	4 - 13
Outdoor Activities	14 - 21
Connecting with the Landscape	22 - 25
Attraction Map	26 - 27
Pride of Merthyr	28 - 29
History	30 - 31
Culture & Heritage	32 - 37
Diverse Retail Offer	38 - 41
Merthyr After Dark	42 - 45
Events & Festivals	46 - 51
Planning Your Visit	52 - 53
Location Map	54 - 55

visitmerthyr.co.uk

Follow Visit Merthyr on Social Media:

[f /Visit Merthyr](https://www.facebook.com/VisitMerthyr) [@visitmerthyr](https://www.instagram.com/visitmerthyr) [@visitmerthyr](https://www.tiktok.com/@visitmerthyr) [#visitmerthyr](https://www.youtube.com/channel/UC...)



A work of art in the People's Park

Cyfarthfa Castle & Park

The imposing castellated features of Cyfarthfa Castle, the best example of a 19th century Ironmaster's residence to have survived in South Wales, stands proud as Merthyr Tydfil's most iconic landmark.

Cyfarthfa Castle was built in 1825 for 'Ironmaster' William Crawshay II, one of the most influential men in Wales at the time. The grand mansion overlooked his huge and hugely successful Cyfarthfa Ironworks.

By 1910, it had become Cyfarthfa Castle Museum & Art Gallery, its impressive treasure trove telling the story of Merthyr Tydfil from the Roman period to the late 20th century. Eclectic exhibits include the first steam whistle, the first voting ballot box and dresses by Merthyr Tydfil-born fashion designers Laura Ashley and Julien McDonald.

The art gallery has an exceptional contemporary art collection, with works on display by Kyffin Williams, Cedric Morris, Esther Grainger and Heinz Koppel, to name but a few.



Despite travelling all over the world, Cyfarthfa Castle is still my favourite place to spend the day. The grounds are just incredible and I love to wander around the museum. It's great to see an ever-increasing number of exciting events in Merthyr. Theatre Soar hosts small-scale drama productions and Cyfarthfa Park is a superb venue for large concerts. If you are up for a challenge, try the hilly half-marathon in March or simply chill out at the weekend long town centre events like, like the Chilli Fiesta and the Food Festival!

Julien Macdonald, fashion designer

The Grade I listed building also sits in the grounds of the Grade II* Cyfarthfa Park - one of Wales's most frequently visited free attractions - beloved equally by tourists and the townsfolk who flock there to enjoy its lush green spaces and the many family-friendly activities that keep the kids occupied for hours on end.

Set in 160 acres, the Park occupies a prominent position overlooking Merthyr Tydfil town and the historic site of the Ironworks. Holder of a prestigious Green Flag Award, visitors will find relaxing sensory gardens

and woodland walks, historic features, miniature trains - and a Splash Pad and playground.

The Active Zone Splash Pad is an interactive play facility promoting safe water play for children of all ages and abilities. The adjoining playground includes swings, climbing frames and slides. Within eyeshot of Canolfan Cyfarthfa's café, it gives parents the peace of mind of being able to watch their children play while having a relaxing cuppa.





Other family activities include the **Cyfarthfa Park Animal Trail**, based on the Victorian era at the time when the Crawshay family lived at Cyfarthfa Castle and hunting was a popular hobby. People taking part are given a copy of the original game card, which lists the animals that lived in the park, including pheasants, partridges, woodcocks and hares. The 'hunters' go into the woodland, follow the path around the four ponds and see how many animals they can spot – there are nine altogether.

Situated next to the beautiful Cyfarthfa Lake, the **Miniature Railway** steam train rides provide brilliant family entertainment and picturesque fun-filled trips.

The year-round events programme includes walks, talks, history workshops, horticultural activities, pond dipping and exhibitions – or you can simply explore the museum, which is a testament to the spirit of the working man and to the story which makes Merthyr Tydfil so important in history, both for Wales and Britain.



A recent £3.1 million redevelopment investment saw the reconstruction and bringing back to life the Park's hidden gems including the **Icehouse** – which was used to store ice from the winter through the summer – and original features such as the walled kitchen garden, glasshouses and the Bothy Heritage Centre. The project also saw restoration of **Cyfarthfa Ponds**, repairs to the bandstand, tennis courts and bowls pavilion.

cyfarthfa.com

Mountain drama just a train ride away

Brecon Mountain Railway

The dramatic scenery of the **Brecon Beacons National Park** is just a train ride away from Merthyr Tydfil – a 'great little train' ride in fact.

It's quite a title to live up to, but Brecon Mountain Railway is fully deserving of the accolade of one of The Great Little Trains of Wales – the 11 narrow gauge railways running through some outstanding areas of natural beauty.

Following part of the route of the original Brecon to Merthyr Tydfil Railway, built in 1859 and closed in 1964, the line runs from Pant and fights its way through the Brecon Beacons using steep gradients to the summit at Torpantau 1,313 feet above sea level.

The vintage steam locomotives' all-weather observation carriage allows panoramic views of the Taf Fechan Reservoir and village of

Pontsticill, where trains stop at the intermediate station which has a lakeside café and children's play area.

At the main station in Pant, there are licensed tearooms with refreshments, and gifts and souvenirs available at the shop. Passengers can also visit the workshop where the locomotives and carriages are repaired.

There is a busy year-round calendar of events, with the highlight being the Christmas 'Ride the Railway' to Santa's Grotto, which has been running for 30 years. Passengers travel to the grotto in Pontsticill, where all children and babies receive a present from Father Christmas. Adults don't miss out, though – they get mulled wine and mince pies!

bmr.wales/





Activate the adrenaline

BikePark Wales

Of course, the landscape has always been there: mountains and valleys, woodland, lakes and rivers. But it's only in relatively recent years that we're taking full advantage of our astounding assets - welcome to Merthyr Tydfil, Welsh Valleys capital of adventure tourism.

It's something of a rookie in activity centre terms, but **BikePark Wales** was a title contender from the day it opened in 2013. The UK's first full-scale mountain bike park, it was built by riders for riders - and rivals the best in the world.

Set in wooded terrain on the side of the valley overlooking Merthyr Tydfil, it's a ski resort without the snow, the pistes swapped for a broad mix of natural trails that meander to the bottom of the mountain.

But although it's a world class venue that has hosted the National Downhill Championships, it's also designed to make mountain biking accessible to everyone, including young children. As well as a family specific loop, there are Saturday Clubs giving children aged from seven upwards a safe introduction to mountain biking, with more advanced courses for teenagers from 13-16.

For intermediate mountain bikers through to seasoned downhill pros, BikePark Wales offers an incredible biking experience unlike anything you'll have experienced in the UK before. It's a great day out for anyone who can ride a bike and would like to try one of the UK's fastest-growing sports.



Features:

- | Uplift service - you and your bike get transported to the top of the mountain by minibus so you can enjoy the descents. You can pedal to the top if you have the stamina!
- | The visitor centre, reminiscent of a ski lodge, includes a café and bike shop.
- | There are 40 trails and the elevation drop is up to 240m.
- | There are five grades of trails, including the family-friendly Badgers Run and Green Graded all- new Kermit trail
- | Bring your own bike or hire high-quality Trek bikes at the park.

bikeparkwales.com





Rock UK Summit Centre

It was once just Wales's national climbing centre, but today's **Rock UK Summit Centre** offers even more. Ongoing major investment has turned it into a brand new multi-activity and adventure centre, perfect for a family day out or a group weekend away.

It still has one of the largest indoor climbing facilities in South Wales: over 120 indoor climbing routes with 18-metre high walls and an impressive 8m overhang. But a Summit Centre visit also extends to canoeing on the nearby Parc Taf Bargoed lakes, exploring the manmade caving system or navigating the Aerial Adventure course.

Nestling in the stunning Taff Bargoed valley, the centre is set amongst woodland, lakes and hills, making it the perfect location for a short break in the Welsh countryside.

All ages and abilities are catered for, whether you're a family, organised group, or individual. If you're trying an activity for the first time, Summit Centre provides tuition and equipment. And if you're experienced and want to improve further, there's expert coaching to hand.

For groups wanting an action-packed weekend, there's a range of activities including raft building, night hikes, gorge walking and much more!

Summit Centre has recently completed a further £4m redevelopment phase and now offers en-suite accommodation for up to 104 guests, meeting and chill out rooms, a fully catered dining hall, café, private garden, sports pitch, outdoor play area and more than 20 instructor-led adventure activities.



Activities available include:

- | Aerial Adventure High Ropes
- | Archery
- | Bushcraft
- | Caving
- | Climbing
- | Kayaking and Canoeing
- | Raft-building

Features:

- | Sleeps 15 to 104 in three self-contained units: Trelewis Drift sleeps 44, Deep Navigation sleeps 40, and Taff Merthyr Tydfil sleeps 20
- | Everything's provided, from kayaks to archery equipment and wood for the bush craft fires.
- | Changing facilities/showers
- | En-suite accommodation for up to 104 guests

rockuk.org/summit



Parkwood Outdoors Dolygaer

Sitting alongside Ponsticill Reservoir in north Merthyr Tydfil, **Parkwood Outdoors Dolygaer** is another multi-activity centre that has fought its way back to fitness with the help of a new personal trainer.

The 'old-timer' in Merthyr Tydfil's activity offer, the former Council-run activity centre was purchased by Parkwood Leisure, one of the UK's largest leisure providers, and reopened in 2015 with an exciting new look and vastly enhanced range of activities – the changes quickly winning the seal of approval on being voted Outdoor Venue of the Year in the 2017 Welsh Hospitality Awards and Best Entertaining Team in 2018.

Dolygaer's specialist instructors are able to offer gorge adventure, sailing, canoeing, kayaking, raft building, rock climbing, caving orienteering and much more.

Its scenic surroundings really need to be seen to be believed, with stunning views over the lake, river and hills and multiple accommodation options allowing you to take in every inch of them.

Choose from sleeping under the stars at the campsite, set next to the river among surrounding trees and hills. Or try Dolygaer Lodge, which has been recently refurbished and sleeps up to 44 people, making it ideal for large groups or schools. Dolygaer Cottage offers six guests a luxurious way to unwind after a day's activities – also newly refurbished and fully equipped cottage, its patio overlooks the river, lake and hills. Dolygaer Chalet, meanwhile, is the latest addition to the centre and provides high quality accommodation for up to 26 visitors while on site.

For adults, children, schools, scouts, guides, stag and hen parties, corporate and military groups and from a birthday activity for eight-year-olds to a challenging team-building exercise, Dolygaer can make it happen.



Features:

- | Range of activities with everything supplied.
- | Spectacular views of the highest mountain in southern Britain, Pen-y-fan (886m).
- | Fun, friendly and safe atmosphere to try out a new activity.
- | Range of accommodation for families and groups.
- | Open all year – the weather may change but the activities never stop.
- | Tackle the full-day Gorge Adventure with its 18-foot pool jump.
- | Fly our all-new 100m Zip Wire across the Nant Callan valley
- | Ask about our Mix and Match days – a great way to try a couple of activities.
- | Book accommodation and get discounts on activities.
- | Stay an extra night to explore the Merthyr Tydfil area.

parkwoodoutdoors.co.uk



Balance body and mind in our great outdoors

Trails network

If safe cycling or walking in fume-free and fabulous scenery is on your visit to-do list, Merthyr Tydfil has a series of trails running the breadth and depth of the county borough, interlinking villages and fascinating stop-offs. Or learn about our history on less strenuous, but cerebrally satisfying, guided town trails. We also have a haul of fishing opportunities, two mountaintop golf courses, the biggest trampoline park in Wales and an international bowls centre.

Superlative cycling and heavenly hiking

The 55-mile (88km) **Taff Trail** (National Cycle Network Route 8) is a multi-purpose route between the Cardiff waterfront in

the south and Brecon in the north. It runs right through Merthyr Tydfil crossing the spectacular Cefn Coed Viaduct and passing through woodlands as it climbs gently up to Pontsticill Reservoir.

Large sections are designated traffic free, using the routes of former tramways, railways, canals and present day canal towpaths – making some of it also suitable for horse riders.

On the former tramway that is now the nine-mile **Trevithick Trail**, the Penyardren Locomotive became the world's first steam-powered railway locomotive to pull a load on rails. There are pieces of original artwork all along the route and the area around Trevithick's Tunnel is well worth exploring.



I really enjoyed filming in Merthyr Tydfil for the series Weatherman Walking. There are many walks that help bring the town's industrial heritage to life, especially its impressive iron furnaces.

Of course, not forgetting Cyfarthfa Castle and the remains of Morlais Castle – and the stunning valley views. There is something here for everyone.

Derek 'the Weatherman' Brockway



If you come off the trail at Pentrebach, you'll be greeted by the fabulous Puddlers Bridge, named after the iron workers who once lived in the area. The nearby Portrait Bench features life-sized models of Merthyr Tydfil born fashion designers Julien Macdonald and Laura Ashley, and Trevithick himself.

At Pontygwaith Nature Reserve, the trail joins the **Taff Trail** (National Cycle Network Route 8), where you can return to Merthyr Tydfil on the **Taff Trail**. Or continue south along Route 8 to Abercynon and find yourself on an amazing piece of old tram road that runs parallel to the River Taff.

The trails section on our interactive map will show you the circular loops connecting both trails if you don't want to retrace your journey.

Only a small section of the mighty 220-mile **Celtic Trail** falls within Merthyr Tydfil – but it's a lovely one. The route enters Quaker's Yard and meanders for almost two miles past Treharris and through stunning Parc Taf Bargoed.

Heads of the Valleys Trail

This route (National Cycle Network route 46) follows the **Taff Trail** over Cefn Coed Viaduct and through the woodlands going north, before turning east past the Brecon Mountain Railway (on highway) and into Pant. The traffic-free path then turns steeply up past the ponds at the top of Dowlais before carrying on along the valley's edge until it falls into Clydach Gorge and on to Llanfoist (Abergavenny).



Why not try out our latest interactive map at visitmerthyr.co.uk/map-page/



Follow in the footsteps of hometown heroes

Between March and October, you can combine gentle exercise with learning on free monthly themed walks in and around the town centre. Led by local experts, they cover everything, from the role of women in Merthyr Tydfil's history to sporting achievements, and from architecture to the age of steam.

Intended to take no more than an hour and a half, at most, to complete, maps can also be downloaded from the We Love Merthyr website or picked up as printed copies in REDHOUSE.



Download Town Trails from welovemerthyr.net

Geocaching is catching on

For a walk with a difference, why not try geocaching, which entails using clues and GPS technology to find a buried treasure or 'cache'. Caches can vary greatly in shape and size - from an inch-high container to a large box - and can be well hidden or immediately apparent.

There are dozens of geocaches hidden across Merthyr Tydfil and accessible using the geocache app downloadable onto mobile phones. Or you can hire free GPS units at Cyfarthfa Museum to use in the park

cyfarthfa.com

The Parkrun phenomenon

If you're one of the hundreds of thousands of people worldwide hooked on your weekly Parkrun, there's no need to break your sequence when you visit Merthyr Tydfil.

Merthyr Leisure Village hosts the start line for the local leg of the free 5km timed runs that take place in cities, towns and villages across the globe at 9am every Saturday

parkrun.org.uk/merthyr

Get yourself a guide

And if you're a runner who likes to tackle more offbeat routes while enjoying the views, we can guarantee you won't get lost in the mountains of Merthyr.

Guided trail runs are available with Off the Tarmac (OTT), a business developed by trail and ultra runners with huge amounts of experience in running everything from short and fast trails to tough long and rugged mountains routes

facebook.com/Offthetarmacrun





An angler's paradise

Merthyr Tydfil is an angler's paradise, offering a superb range of salmon, trout and coarse fishing on rivers, reservoirs and ponds.

Cyfarthfa Park Lake provides the nearest fishing opportunity to the town centre and has a range of fish, including carp, bream, rudd, roach, barbel, tench, gudgeon and chub.

Further south, the lake at **Parc Taf Bargoed** is a high-quality fishing facility where you can use fully-accessible platforms and paths to attempt to catch brown and rainbow trout.

Merthyr Tydfil's coarse fishing is spread over reservoirs and ponds - the 2½ mile long **Ponsticill Reservoir** and neighbouring **Dolygaer Reservoir** offer excellent pike, bream, perch and roach fishing. There are two ponds, **Penywern Top and Middle Ponds**, where you can find bream, roach, tench, perch, barbel and carp.

Merthyr Tydfil Angling Association also offers 14 miles of fishing on the **River Taff** and its tributaries, the Rivers Taf Fechan and Taf Fawr, all of it wild brown trout fishing

mtaa.co.uk

Moorland courses to the fore

Golf comes with the wow factor at Merthyr Tydfil - our two 18-hole moorland courses rise high above the town, spilling into the **Brecon Beacons National Park** and combining the challenges of elevated holes and changeable climate.

Morlais Castle Golf Club was named after the castle built in 1270 by Gilbert de Clare, Earl of Gloucester and Lord of Glamorgan. There are remains of the castle running along the right hand side of the third fairway, and the panoramic views from the top are very special.

The club has a first rate indoor practice area and a new three-hole academy short course that's less demanding and safer for young players. There's also a clubhouse with restaurant/bar and fully stocked golf shop. If you'd like to stay nearby, you can't get closer than the club's recently refurbished self-catering farmhouse, which can accommodate up to six guests.

To the west of **Merthyr Tydfil (Cilsanws) Golf Club** lies the Cilsanws Nature Reserve, a Site of Special Scientific Interest. A total 14 of the club's holes are within the Brecon Beacons National Park and some of its fairways are 1,000ft or more above sea level.

The terrain has similarities to links/heathland courses. According to the club, the course 'plays considerably longer than the card length of 5,622 yards due to a lack of run on our peat dominated fairways'. Facilities include a lounge and bar area and 70-seater restaurant.





If you're looking for indoor activities...

Opened in 2008, **Merthyr Tydfil Leisure Village** - spread over a 100,000 sq ft site - offers the best in contemporary sport and leisure facilities, seven days a week.

The centrepiece of the complex is **Merthyr Tydfil Leisure Centre**, which features a 25mx13m, six-lane swimming pool, learner pool, and freeform leisure pool with flume slide. There's also a fitness suite, health suite with steam room and sauna, dance studio, three squash courts and hall-based sports, including badminton, football, basketball and tennis.

merthyrleisuretrust.co.uk

Superbowl UK Merthyr Tydfil is one of the latest ventures launched by expanding ten-pin bowling operator Superbowl. The Leisure Village facility has 14 bowling lanes, the latest scoring system, bumpers and ramps.

You can experience the thrill of the ultimate laser quest adventure and SEGA Prize Zone,

with video games, arcade games and arcade slot machines suitable for all ages. There's also the Crazy Club soft play centre for children, and licensed lounge bar and diner.

superbowluk.co.uk

A more sedate version of bowls is available at **Merthyr Tydfil International Bowls Centre**, which has a six-rink indoor bowling green and licensed lounge.

merthirtydfilindoorbowlsclub.co.uk

Outside the Leisure Village, but not far from it, is Vertigo Trampoline Park, the biggest in Wales - offering more than 40,000 sq ft of free bounce and endless activities via connected and competitive trampolines, Slam Dunk, Dodgeball, foam pit area and a café.

vertigopark.co.uk



Connecting with the landscape



Just a 35-minute drive from the bustle of Wales's capital city is a county borough dotted with nature reserves alive with flora and fauna. We have no fewer than seven reserves, nature conservation areas and Sites of Special Scientific Interest (SSSIs).

Among them are **Parc Taf Bargoed**, the hidden emerald in the crown of Merthyr Tydfil's green spaces. Yet not so long ago, it was black and industrial – the complete opposite of today's haven for wildlife.

Formerly the site of three coal mines, extensive regeneration means the 140-hectare park now has Green Flag status. The centrepiece is its 3.6 hectares of pristine lakes. The water quality is now superb for wildlife – it's filtered through one of Europe's largest reedbeds – and attracts Dippers, Kingfishers, Moorhens, Coots, Little Grebe, Mallards and Herons.

Over 100 species of birds have been recorded within a 3km square of the park, along with more than 100 species of invertebrates, over 40 species of moths, 20 species of mammals and butterflies and more than 200 species of plants.

At the opposite, northern end of the county borough, **Taf Fechan Nature Reserve** is a 2.5km stretch of wooded limestone gorge cut by the River Taf Fechan, between the bridges of Pontsarn and Cefn Coed.

One of our SSSIs, the reserve has a wide diversity of habitats, fast and slow flowing fresh water and open and dense deciduous woodland. The Gurnos quarryface caves are homes to bats and the river stretch supports birds such as Dippers and Grey Wagtails.



At nearby **Cilsanws Nature Reserve**, larches and scots pine grow alongside rowan and mountain ash trees, attracting species such as Thrush, Starlings and Blackbirds.

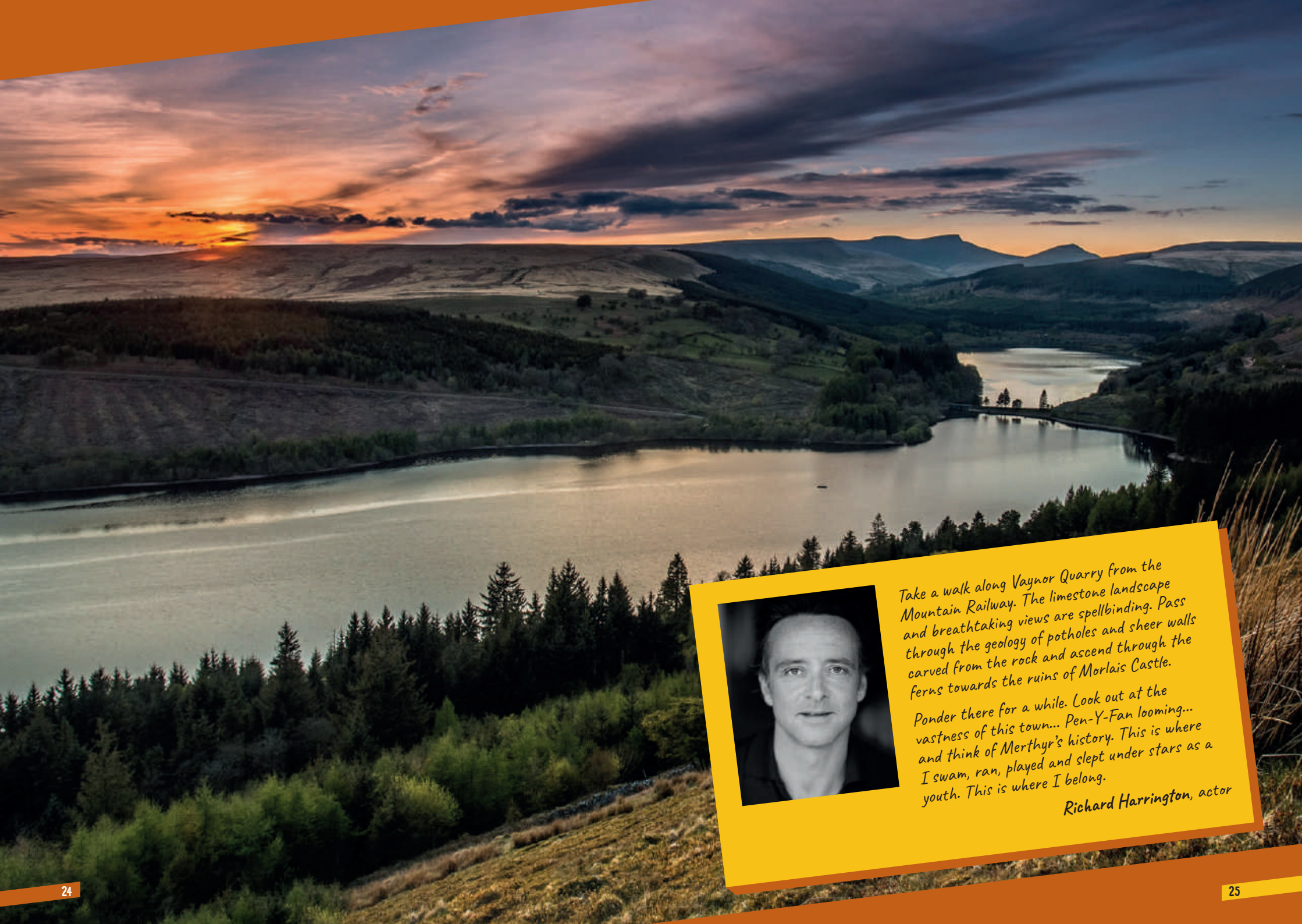
Another SSI is **Penmoelallt Community Woodland**, one of Wales's most ancient woodlands featuring a circular walk with eye-catching sculptures and information 'way stations' that tell the story of its natural history and environment.

Pontygwaith Farm is a welcoming 4½-acre garden adjacent to the Taff Trail near Treharris. Enjoy the perennial borders, lakeside walk, rose garden and Japanese garden that surround the 17th century farmhouse, and admire the Grade II-listed humpback packhorse bridge that spans the river.

Many of our natural resources are managed and supported by Merthyr Tydfil and District Naturalists' Society.

merthyrnats.org.uk





Take a walk along Vaynor Quarry from the Mountain Railway. The limestone landscape and breathtaking views are spellbinding. Pass through the geology of potholes and sheer walls carved from the rock and ascend through the ferns towards the ruins of Morlais Castle.

Ponder there for a while. Look out at the vastness of this town... Pen-Y-Fan looming... and think of Merthyr's history. This is where I swam, ran, played and slept under stars as a youth. This is where I belong.

Richard Harrington, actor

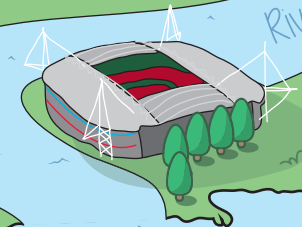
Attraction Map

Did you know?

Merthyr Tydfil had the world's first cast iron railway bridge, world's largest ironworks, and the world's first steam locomotive journey took place here



UK's premier mountain bike destination, BikePark Wales



ON THE DOORSTEP OF CARDIFF:
30 MINUTES BY CAR, UNDER AN HOUR BY TRAIN



Cradle of working class politics

GREEN FLAG FOR PARC TAF
BARGOED, FORMER SITE OF
THREE COAL MINES

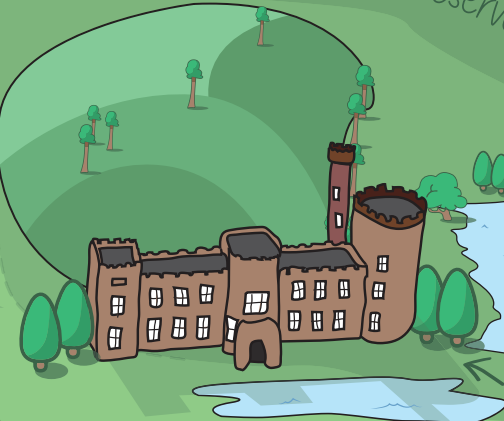


Best view of Pen y Fan, the highest peak in southern Britain

4 LONG-DISTANCE TRAILS: TAFF TRAIL, TREVITHICK TRAIL, CELTIC TRAIL, & HEADS OF THE VALLEYS TRAIL

PART OF BRECON BEACONS NATIONAL PARK AND FOREST FAWR GEOPARK

Rivers, lakes and reservoirs



Cyfarthfa Castle
19th century ironmaster's mansion

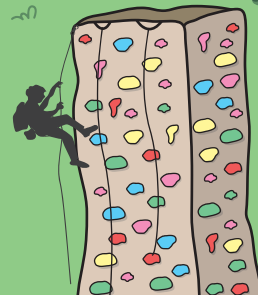


BRECON MOUNTAIN RAILWAY

Parkwood Outdoors Dolygaer

Cymraeg
See the Welsh language in place names, hear it at Canolfan Soar

2 sites of Special Scientific Interest
60 areas of nature conservation



WALE'S LARGEST INDOOR CLIMBING WALL, ROCK UK SUMMIT CENTRE

MOUNTAINTOP VISTAS AND AN INTERNATIONAL DARK SKY RESERVE

Pride of Merthyr photograph competition finalist -
Ponsticill Reservoir by Richard Hooper



History

It happened here – so much history in one small area

Merthyr Tydfil's colourful past takes a bit of absorbing. From Bronze Age pottery to Roman forts, a patron saint to a Norman castle and the mightiest ironworks the world has ever seen to the world's first steam locomotive journey, the historic Merthyr Rising of 1831 and Wales's first Labour MP to the election of a female Mayor before women even had equal voting rights... there's quite a lot to learn. Here's a snapshot:

7.000BC Evidence of Neolithic activity, with Neolithic flints found across the county borough in recent years.

6.000BC Stone Age and Bronze Age people are living in the Morlais and Cilsanws hills – arrowheads and pottery found locally can be seen on display at Cyfarthfa Castle Museum and Art Gallery.

800BC Hillforts are built during the Iron Age.

69–96AD Penyardren Roman Fort is home to a garrison of more than 500 soldiers.

480 Tudful, daughter of Brychan, King of Breconshire, is martyred during a pagan raid. The name of Merthyr Tydfil comes from this Christian tradition – remembered at St Tydfil's Church.

1270 Morlais Castle – a ruin today – is built by an Anglo Norman marcher lord. Morlais Castle is destroyed following the battle of Maes Y Faenor and the burning down of the original Vaynor Church.

1759 Dowlais Ironworks is established. Three more ironworks – Plymouth (1763), Cyfarthfa (1766) and Penyardren (1784) – begin blast furnace operations. This marks the beginning of 'industrial Merthyr Tydfil'.

1793 Pontycafnau – a cast-iron tramroad bridge and aqueduct thought to be the world's oldest – is erected across the River Taff to carry water and supplies of limestone to Cyfarthfa Ironworks. The bridge, a few yards from the Taff Trail, can still be used by pedestrians today.

1798 The Glamorganshire Canal from Merthyr Tydfil to Cardiff opens. From Aberfan through Troedyrhiw and Abercanaid to Rhydyar, walkers and cyclists use the canal route today as part of the Taff Trail.

1801 The first national census shows Merthyr Tydfil is the largest settlement in Wales with a population of 7,705.

1802 Admiral Lord Nelson visits Cyfarthfa Ironworks, now the largest works in the world and important to the success of the Royal Navy in wartime because of the cannons and cannonballs forged there.

1804 The world's first steam locomotive to run on rails hauls a 10 ton load of iron in wagons along the nine miles of new tramroad that links the Merthyr Tydfil Ironworks to the Glamorganshire Canal at Abercynon. This historic route is now a cycling/ walking trail named after the locomotive engineer and inventor Richard Trevithick.

1825 Cyfarthfa Castle is built for William Crawshay II.

1831 Merthyr Tydfil Rising. Protests by townspeople angry at harsh bailiff action and by workers angry at unsatisfactory conditions lead to demonstrations and the disarming of soldiers. A red flag is raised. Protesters gather round the Castle Inn, soldiers open fire and several members of the crowd are killed. Dic Penderyn was later hanged for allegedly wounding a soldier.

1841 The Brunel-built Taff Vale Railway opens, linking Merthyr Tydfil to Cardiff.

1868 A railway is built from Merthyr Tydfil to Brecon. Its two graceful viaducts at Cefn Coed and Ponsarn are now part of the Taff Trail.

1870 At the Temperance Hall (now the Scala), Rose Mary Crawshay organises the first public meeting in Wales to discuss women's suffrage.

1870 John Hughes from Merthyr Tydfil established the Russian town of Hughesovka, setting up an ironworks and coal mines. It is now the Ukrainian city of Donetsk.

1876 Dowlais vocalist, Margaret Watts-Hughes becomes the first woman to present a scientific invention at the Royal Society. She was a pioneer in the science of sound and displayed images of the human voice.

1900 James Keir Hardie is elected 'junior' MP for Merthyr Tydfil Boroughs. In 1906, he becomes the first leader of the Labour Party.

1911 Merthyr Tydfil's population reaches 80,991.

1918 The people of Merthyr Tydfil break records by raising over £1,000,000 for the war effort in June 1918, when a WWI tank visited the town.

1925 Fashion designer Laura Ashley is born in Dowlais.

1927 Even before women get equal voting rights, councillors elect Mary Ann Edwards to be Merthyr Tydfil's first female Mayor.

1948 The Hoover factory opens at Pentrebach to build US-designed washing machines for the world. 350 people are employed – later the workforce is 10 times as large.

1957 Brecon Beacons National Park is created.

1989–93 Merthyr Vale, Trelewis Drift Mine, Deep Navigation and Taff Merthyr Tydfil Collieries all close.

1997 The three former colliery sites are reclaimed to create the scenic Parc Taf Bargoed. Merthyr Vale is now the site of a new housing development.

21st century Whereas heavy industry was once the town's past, it is tourism, retail, light manufacturing, and the service and public sectors that are its present. Read on to discover more about the Merthyr Tydfil of today.





In amongst all these geological finds and areas of natural beauty are some glorious manmade attractions, relics of Merthyr Tydfil's early cultural, industrial, commercial and religious scenes.

Buildings making the grade

Originally Merthyr Tydfil's Town Hall, the late Victorian Grade II* listed **REDHOUSE Cymru** was once the seat of local government including the council chamber, magistrates' court and holding cells for remand prisoners.

Today, it's been extensively renovated and restored, blending its elegant period features with brand new arts and technology facilities to restore it to the standout centrepiece structure of the town centre.



Exploring the building leads you to discovery after discovery: the beautiful multi-media atriumed Plymouth Courtyard with its glass roof, the Dowlais Theatre, dedicated art exhibition space Y Galeri Faenor, dance and recording studios, music practice rooms, café, conference facilities and heritage interpretation components.

redhousecymru.com



Merthyr Tydfil was forged in the furnaces of the Industrial Revolution and, as the town pumped out coal and iron for the world, her arteries reached out to the coast and beyond.

But where the hills were once black and the rivers ran rusty, nature has reclaimed the natural beauty of the valley and the Taff Trail now provides one of the most stunning walking paths in Wales. Start on Cefn Viaduct (and a pretty impressive place it is to start, too!) and follow the route of the old Glamorganshire Canal down through Abercanaid, Pentrebach and Troedyrhiw - there are a few lovely little pubs along the way to help those fast feet as well!

The views down the valley are stunning; but look over your shoulder back up at Merthyr and the Beacons behind and you'll get a sense of the history of our valley and the pride we have in it. Enjoy!

Steve Speirs, actor and writer

Another listed Grade II Merthyr Tydfil building leading a new life in the 21st century.

Canolfan and Theatr Soar is the Welsh-speaking heart of Merthyr Tydfil.

The former Zoar Congregationalist Chapel was completed in 1842 and before it closed in 2005, had been one of the largest chapels in Wales. Merthyr Tydfil-born composer of legendary Welsh ballad **Myfanwy** Dr Joseph Parry led its 'Gymanfa Ganu' - festival of hymns - for many years.

The aim of the refurbished Canolfan is to promote the Welsh language and create

opportunities for people to socialise and participate in Welsh-based activities. The 200-seat Theatr Soar is the venue for drama, dance, live music, poetry, film, concerts, comedy and workshops. You can also visit Caffi Cwtsh for a coffee, cawl (soup) or pancake and buy a book or gifts from Llyfrau Enfys. Whether you're a Welsh speaker or a learner eager to use your Welsh or a non-Welsh speaker with an interest in heritage, arts and culture, a Croeso Cynnes awaits you at Canolfan Soar.

theatrsoar.co.uk





Number 4 Chapel Row is **Joseph Parry's Cottage**, the birthplace of the musician and composer Dr Joseph Parry (1841-1903), who achieved fame through his hymns and operas – as well as his most famous song Myfanwy.

The cottage has been beautifully preserved and is open to the public as a museum to allow visitors to experience the traditional home of a 19th century ironworker. Many of Dr Parry's photographs, copies of some of his compositions and other documents are on display.

The building is open on Saturday and Sunday afternoons from April to September, and by appointment only outside these times – please contact Cyfarthfa Castle Museum and Art Gallery for details.

The Ynysfach Engine House was built in 1836 for the adjacent Ynysfach Ironworks. The works closed in 1874 and the engine house fell into disuse. It was restored in 1989 and reopened as a heritage centre.

Ynysfach is currently open only on weekends and by appointment for groups – again, contact the Cyfarthfa Castle museum for details.

cyfarthfa.com



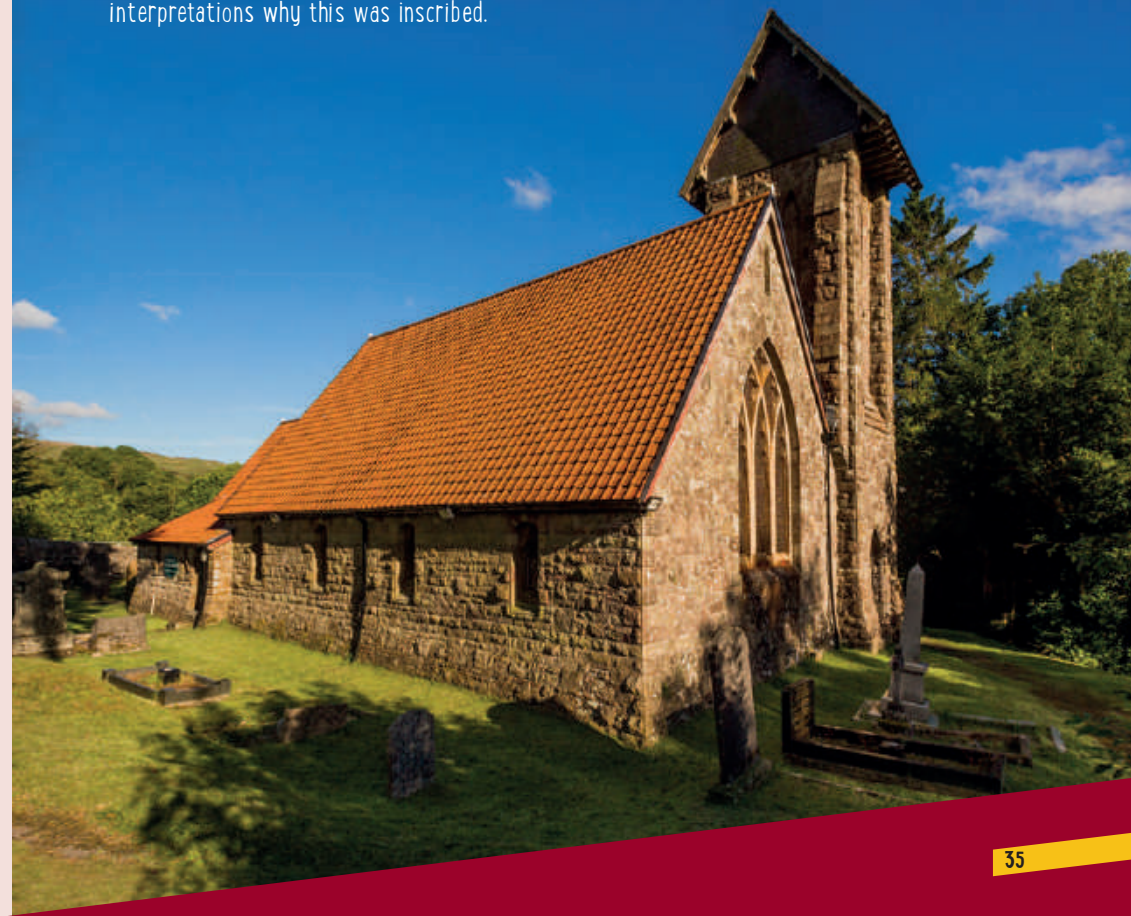
Merthyr Tydfil is dotted with historical churches and chapels:

Travel to the remote hillside near Pontsticill to **St Gwynno's Church** (better known as Vaynor Church), and you'll find the grave of Merthyr Tydfil ironmaster Robert Thompson Crawshay, who had St Gwynno's rebuilt in 1870 after the original medieval parish church of Vaynor was burnt down during the battle of Maesvaynor in 1291 and the building which replaced it became dilapidated.

Crawshay's grave comprises a huge quarrystone slab, believed to weigh 10 tons, which bears the inscription 'God forgive me'. There are a number of historian interpretations why this was inscribed.

Also steeped in history is **St Tydfils**, the Old Parish Church of Merthyr Tydfil, which was built to keep sacred the spot at the lower end of the High Street where Tydfil was martyred because of her Christian beliefs. It is thought that some form of church has stood on this spot for nearly 1500 years. The present church, built in 1894, was designed by J L Pearson, who also designed Truro Cathedral.

In the centre of town is **St David's Parish Church**, built in the Victorian Gothic style in 1847 to house the growing English-speaking congregation.





Reminders of the golden age of iron

The exact magnitude and scale of Cyfarthfa Ironworks is difficult to comprehend, but what remains of the **Cyfarthfa furnaces** is the largest and most complete range surviving anywhere on earth, according to the Association of Industrial Archaeology.

Much of the site was demolished over the course of the 20th century after it fell out of use. But the impressive remains that can still be seen are of six massive blast furnaces and a huge brick arch – which is still standing – built to bridge the gap in the bank of furnaces.

Essential to the operation of the Ironworks was the **Cyfarthfa Leat & Tramroad**, an old watercourse, running approximately 1000m from its source on the banks of the Taf Fechan to Cyfarthfa Lake and was originally built to convey water to the Ironworks. The Old Tramway running below the Leat on a shelf hewn from the rock face was built to transport limestone by horse drawn tram

from the Gurnos Quarry to the Cyfarthfa Ironworks and it now forms a tree-lined avenue from which you can view the Leat walls above.

There have been a number of world firsts in Merthyr Tydfil. **Trevithick Tunnel** acting as a permanent reminder of one of our favourites. On 21 February 1804, local people witnessed the first ever steam locomotive journey on rails, as Richard Trevithick's 'Pendydarren Locomotive' travelled down through Pentrebach and on to Abercynon.

Nobody would argue that Merthyr Tydfil doesn't have a dramatic landscape – and our pair of impressive viaducts certainly play no small part in that. **Cefn Viaduct** is the third largest in Wales and is now a Grade II listed structure. It was constructed in early 1866 on a curve so that the railway line avoided property owned by ironmaster Robert Thompson Crawshay.

The viaduct consists of 15 arches, each one 39ft 6ins wide, and is 770 ft long with a maximum height of 115 ft. The last trains travelled over the viaduct in the mid-1960s and it subsequently fell into disrepair. It was refurbished with Lottery funding and is now part of the Taff Trail, Route 8 of the National Cycleway.

Also constructed in the 1860s, **Pontsarn Viaduct** was built to carry the Brecon and Merthyr Tydfil Railway over the Taff Fechan river. The name Pontsarn loosely means 'bridge of the long road', the road in question being a branch of the Roman road from Gloucester to West Wales.

The viaduct has seven spans and is an historic listed structure. It's situated in an area of natural beauty, with the Pontsarn Blue Pool and waterfall nearby.



Diverse retail offer



Designer boutiques and one of the UK's largest independent discount stores

Millions of shoppers flock to Merthyr Tydfil every year, just to visit one of the UK's largest independent discount stores. But as well as Trago Mills and retail park shopping, we also have a bustling traditional high street and popular indoor and outdoor markets.

Come rain or come shine

Along with two covered shopping centres, Merthyr Tydfil's pedestrianised main street has the usual high street names, a surprisingly diverse range of independent shops and businesses.

St Tydfil Shopping Centre, which provides a modern semi-covered pedestrian environment has some 50 shops, with many national retailers and several distinctive independent businesses. The indoor market above it has over 30 stalls stocking a fantastic range of produce and gifts. Arguably the most famous stallholder there is Chris Jones, who claims to have taught Jamie Oliver how to make Welsh cakes. He makes and sells over 1,000 cakes every day. The celebrity chef even included the recipe in his book, *Jamie's Great Britain*.

OR MARKET



Throughout the year, St Tydfil Shopping Centre organises regular pop-up markets in association with shops and businesses initiative **We Love Merthyr** - check social media for updates

sttydfilshoppingcentre.co.uk

Beacons Place links the railway station and Tesco superstore to the main high street and has a host of independent and national retailers.

The town centre has a wide selection of independent retailers, including Wales's largest stockist of comics and games.

The most historic part of the town centre, **Pontmorlais** - currently benefiting from an extensive ongoing refurbishment programme - is increasingly seeing the opening of boutiques, speciality grocers and other niche retailers.





Designer shopping and dropping

Big designer fashion names abound at **Cyfarthfa Shopping Park**. The 29,800 sq m scheme comprises 22 retail units, four food outlets, a sports health club and more than 1,400 car parking spaces. The park is also home to the award-winning B&Q low-carbon 'eco learning' store.

Marks & Spencer, Next, River Island and H&M were recently joined by premium fashion store Tessuti, which sells names such as Ralph Lauren, Vivienne Westwood, Hugo Boss and Emporio Armani.

cyfarthfashopping.com

Markets galore

Come Tuesday or Saturday and the high street is packed with colourful market stalls. Seasonal produce and locally made goods feature in the farmers' market held at Cyfarthfa Park on bank holidays. To qualify to trade there, produce must be grown, reared or have added value and be from within a 50-mile radius of Merthyr Tydfil.

There are also pop-up markets and a growing number of seasonal food festivals (see Events section on page 49 and 50).

The story of Trago

The site of Merthyr Tydfil's former brickworks came to the attention of Trago owner and Chairman Bruce Robertson years ago. He recognised that as the gateway to the popular tourist destinations of the Valleys and the Brecon Beacons, Merthyr Tydfil also had enormous potential as a burgeoning retail hub between the major cities of Cardiff and Swansea. The building – with its trademark castellated 'towers' – is a shiny new landmark testimonial to Merthyr Tydfil's growing commercial confidence.

Trago is a family-run, independent discount retailer that started trading in Cornwall in the mid-1960s. The business grew rapidly and it now offers over 200,000 products across 38 departments, including furniture, soft furnishings, clothing, toys, gardening

products and plants, fitted kitchens, DIY, carpets and more. Today, there are four stores, with Merthyr being the only one in Wales.

Along with 200,000 sq ft of retail therapy inside the building, hungry shoppers can refuel at a café & coffee bar and fish and chip shop. And the Piazza outside the main entrance hosts small independent retailers including one of the oldest bakeries in the UK and the world's oldest commercial producer of Cornish Pasties.

Soft play facility Play-Zone@Trago offers a range of play areas, including a Sensory Zone and toddler area, together with a coffee shop serving refreshments and snacks.

trago.co.uk

Merthyr After Dark



I love the nightlife



Merthyr Tydfil's nightlife is legendary. But it's not all about the bars and clubs – even though we have more than our fair share! Due to a rapid rise in the number of entertainment venues in recent years, you can catch regular shows, plays and music performances.

With a huge range of cafés, pubs, restaurants and takeaways, Merthyr Tydfil has a surprisingly diverse range of places to eat and drink.

The town's long history of welcoming different nationalities attracted by the promise of work has resulted in an eclectic food offering, whether you choose to eat out or purchase something to take home with you.

The town centre has had a strong café culture ever since Italian immigrants began opening cafés, ice cream parlours and fish and chip shops from the 1880s onwards. A wealth of other places to eat offer flavours from Portugal, the Caribbean, India, China, Turkey, Bangladesh, Tunisia and – of course – Wales.

A welcome addition in recent years is Merthyr's first and only fine dining restaurant, **JOL's**. The town's number one TripAdvisor ranked restaurant is owned by head chef Jamie O'Leary, a former sous chef at Abergavenny's award-winning The Hardwick, who sources the finest local produce for innovative seasonal menus.

jolsrestaurant.co.uk/

Merthyr Tydfil's diverse population also means that as well as dining cosmopolitanly, you can buy not just Welsh and British groceries but pick up some Polish and Portuguese specialities, too.

If you're just looking for a drink or several, the town centre and its environs have a huge range of licensed premises – from a brewpub to national chains, bars offering live bands and open mic nights and places where you can just dance.

The **New Crown Inn** has become a major player in Merthyr Tydfil's music scene in recent years, operating as both a restaurant/bar and live music venue. The grade II listed public house has been a feature of High Street since 1785, and in its long history has been a hunting lodge and a hotel. The New Crown Inn is now a much loved, award-winning music venue and restaurant offering an authentic taste of Portugal.

The latest addition to the town centre's licensed premises is named after its most famous politician. Independently-owned **Hardie's** is open for breakfast in the morning and becomes a coffee shop during the day and Merthyr Tydfil's first cocktail bar at night.

Please refer to our interactive **Visit Merthyr Location Map** for establishment details.



The original town hall, **REDHOUSE Cymru** is right in the heart of the town centre. It stages art exhibitions, theatre productions, comedy, live music, open mic nights and more unusual events.

redhousecymru.com/events/

Theatr Soar's doors were officially opened in 2011 with a launch event full of performances, and has been full of drama, dance, music, film, concerts, comedy and workshops ever since.

Just outside the town centre, **Merthyr Tydfil Leisure Village** is more than just a sports venue. The 10-screen **Vue Cinema** is the best



place to experience the latest blockbusters, each auditorium benefiting from the latest digital projectors, Dolby Digital Surround Sound and immersive Digital 3D capabilities. The Village also features **Superbowl UK Merthyr Tydfil** and a number of restaurant chains and cafés.



Events & Festivals



There's always something happening, and it's usually quite loud

There's never a dull day in Merthyr Tydfil. A non-stop calendar of events features scooters, chillis and a festival celebrating the flying of the Red Flag for the first time in Wales!

Every spring, the town welcomes hundreds of runners for the **Merthyr Half-marathon**, a 13.1-mile undulating, urban and rural race, travelling through the town and surrounding countryside.

Taking advantage of the Trevithick and Taff Trails, it's predominately off-road on tarmacked trails. Including mini and junior fun runs, it takes place in March.

merthyrhalfmarathon.co.uk

April sees some of the biggest stars of the British comedy circuit join some of our best rising talent for the **Merthyr Comedy Festival**.

Spread over three days and held at venues across the town centre, the festival showcases a wide range of stand-up comedy, including children's shows, family shows and shows that are a little more adult in their nature.

facebook.com/merthyrcomedyfestival/





I'm a proud son of Merthyr Tydfil; I was born and brought up there. I loved history as a kid, still do - and what better place to grow up than the town my Grandfather used to call 'the most famous little town in the world'.

Our glorious past is without compare. We were the iron capital of the planet. Welsh steam coal was first dug from our mountains and we led the way as the industrial revolution changed how human beings lived.

Of all our great achievements, our greatest asset is our people. Quite simply, I love them. I love coming home to spend time with them. I'll be back in May for the Merthyr Rising Festival. It's my favourite time of the year - to be among your own.

Jonny Owen, producer, actor and writer

In May, scooter enthusiasts from across the UK make the annual pilgrimage to Penderyn Square and REDHOUSE for **Scooters on the Square**. The free all-day event features a custom scooter show, stalls and displays and a scooter ride-out, followed by an evening of live music. redhousecymru.com



© DP Visuals

Did you know that Merthyr was the place where the red flag was first flown in Wales? **Merthyr Rising** is a three-day music, arts and ideas festival that celebrates working class culture and resistance.

Taking place during the anniversary of one of the very first organised uprisings by workers in May 1831 - known as the Merthyr Rising - the Penderyn Square festival, which showcases the cultural vibrancy of the town, features inspiring thinkers, speakers and debates, held alongside appearance by artists, musicians, writers and filmmakers - and each year has an increasingly ambitious line-up.

merthyrising.uk

"This event is all about chilli and nothing else," is the proud boast of organisers of the **Merthyr Chilli Fiesta**, which has something for 'everyone from the hardcore chilli connoisseur to the curious'.

The festival again takes place in Penderyn Square in June and hosts some of the best chilli producers from around the UK, exhibiting some of the best chilli products including dips, jams, mustards, chocolate, chilli merchandise and other items which can't be found in local outlets. There's also a popular chilli eating contest, definitely not for the faint-hearted.

chillifest.net/merthyr-cf-2019/4582336271

Visit visitmerthyr.co.uk news and events section for up to date event listings.



Also in June, our beautiful and accessible countryside and leisure facilities come to the fore in a week of events aimed at getting people of all ages out and about.

Merthyr Tydfil Stride and Ride Festival has more than 40 exciting activities spanning nine days, from orienteering to Nordic walking and even a 'toddle waddle'. Contact merthyrstride@gmail.com for further info.

Another summer event that attracts connoisseurs in their thousands, **Merthyr Food Festival** in July features some 50 stalls set up by food producers and local breweries, foodie themed entertainment, chef demos and children's activities.

Entry is free and the main festival takes place in Penderyn Square, with a Pop-Up Vegan event in St Tydfil Shopping Centre offering everything vegan - from pizzas to chocolates and cakes to quiches, plus vegan friendly gifts welovemerthyr.co.uk/public/event/merthyr-food-festival



The summer ends on a high note with two late-August crowd pleasers. The Merthyr Tydfil Global Village Festival celebrates the heritage and multicultural nature of the county borough through music, dance, art, film, voice and performance in an inclusive way, with people getting involved in workshops or just browsing the stalls. A more serious side to the festival seeks to welcome and inform newer residents about life in Merthyr Tydfil. <http://globalvillage.wales/>

The New Crown Inn, which works hard to make its live music events an unforgettable experience, has seen its **Crownload Festival** get bigger and better year on year. It features a host of top performers ranging from original and cover bands to some of the UK's top tribute acts.



In order to accommodate the sheer number of visitors, Crownload has gone from being a small musical event extension of the inn's garden to a full blown open-air stage and crowd at the nearby Lucy Thomas fountain. <http://bit.ly/2H4gu6C>

It's the autumn, and Cyfarthfa Park is one of the best open spaces for a Bonfire Night firework display - **The Big Sparkle** doesn't disappoint. Come along to Cyfarthfa Park for a spectacular fireworks show, music, food stalls, funfair rides and appearances from special mascots.

Late November sees the **Christmas lights switch-on and Santa's Grotto** in the town centre.

You can visit Santa and his helpers in their Christmas Grotto in St Tydfil Shopping Centre. There's a whole host of other seasonal attractions including real reindeer, fairground rides, a pop-up Christmas Gift Market, walkabout characters, face painting and balloon modelling, an animal petting zone,

mobile climbing wall and dance and music performances by local groups.

Then make your way to Penderyn Square for festive music and the lights switch-on at REDHOUSE.

December sees Santa at his favourite castle. **The Cyfarthfa Christmas Show** gives families the opportunity to not only meet Santa, but also take part in a fun festive craft activity, making a classic Victorian Christmas Wreath with fresh evergreens.



Planning your Visit

How to find us, how to get here and where to stay

Car

We're just 20 minutes from Junction 32 off the M4 motorway, on the doorstep of Cardiff. The A470 runs north-south and the A465 (Heads of the Valleys road) runs east-west through the region so there's easy access from all directions.

Coach & Bus

Good value coach travel brings you into the bus station in Merthyr Tydfil town centre. The extensive bus service throughout the region offers great value day tickets. The T4 bus, with leather seats and free WiFi, links Cardiff and Mid Wales, stopping off at Merthyr Tydfil, Llwyn Onn Reservoir and near the base of Pen y Fan.

traveline-cymru.info
trawscymru.info

Cycle hire

For bike hire, route ideas and even a cycle guide contact Gethin MTB.

gethinmtb.com/cycle-stay/

Plane

Cardiff Airport is a 45-minute drive, with daily flights to and from worldwide destinations. There are excellent road links to Bristol, Birmingham, London Heathrow and London Gatwick airports.

cardiff-airport.com

Train

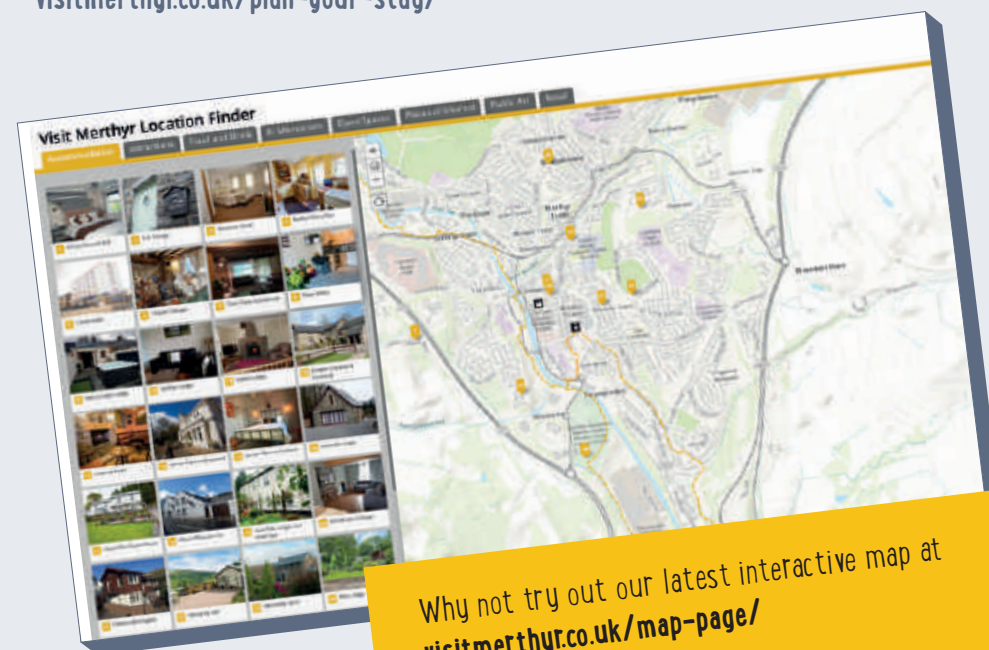
There are regular trains from Cardiff, which is a major hub for travel to all parts of the UK. The five stations in the region are Quaker's Yard, Merthyr Vale, Troed-y-Rhiw, Pentrebach and Merthyr Tydfil Tydfil.

nationalrail.co.uk

Accommodation

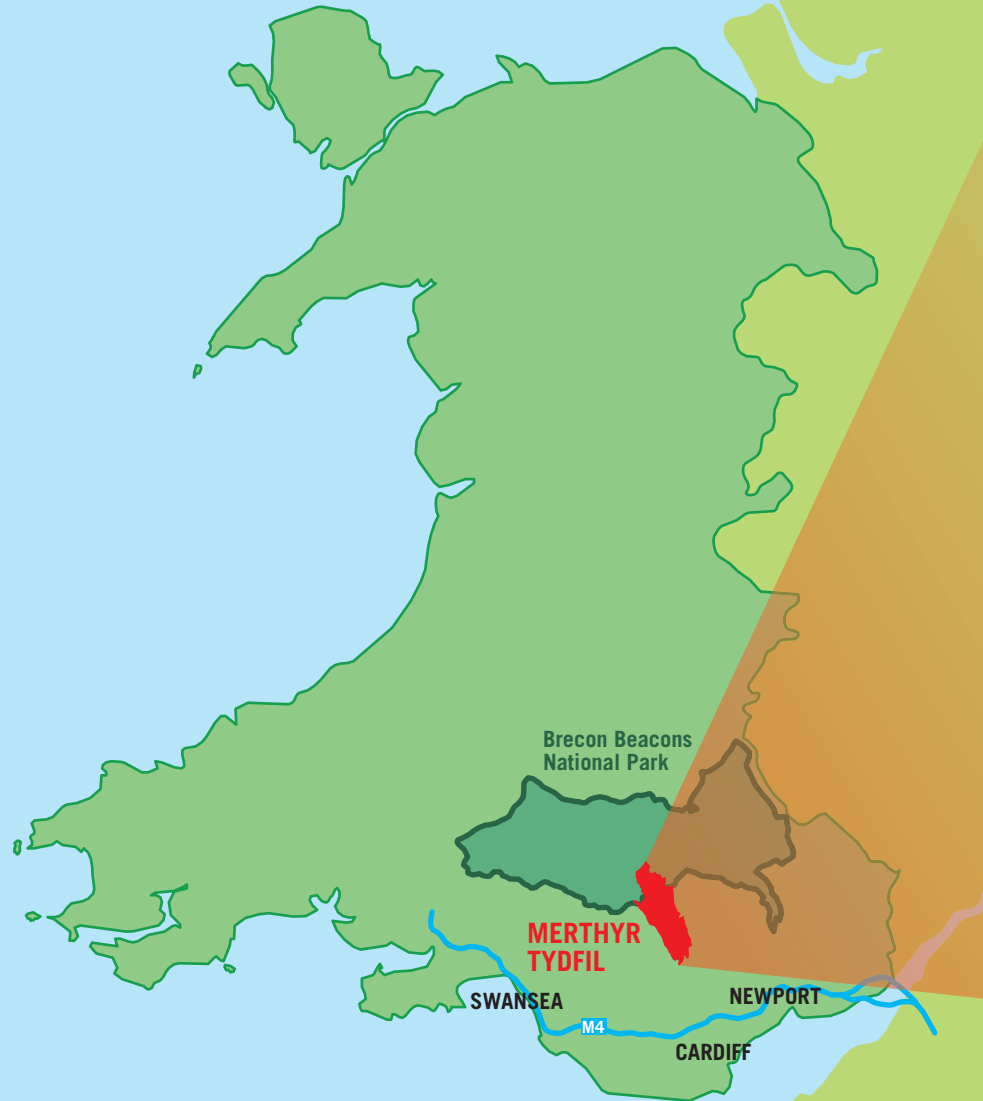
For such a compact region we've a huge variety of places to stay, from historic miners' cottages and farmhouse B&Bs to camping, bunkhouses and modern hotels.

visitmerthyr.co.uk/plan-your-stay/



Why not try out our latest interactive map at
visitmerthyr.co.uk/map-page/

Discover the beautiful surroundings of Merthyr Tydfil



Areas of Interest

- 1 Redhouse
- 2 Town Centre
- 3 Llwyn-On Reservoir
- 4 Pontsticill Reservoir
- 5 Vaynor Church
- 6 Morlais Castle
- 7 BikePark Wales
- 8 Brecon Mountain Railway
- 9 Cyfarthfa Ironworks
- 10 Cyfarthfa Castle & Park
- 11 Parkwood Outdoors Dolygaer
- 12 Garwnant Visitor Centre
- 13 Joseph Parry's Cottage
- 14 Merthyr Tydfil Leisure Village
- 15 Parc Taf Bargoed
- 16 Cyfarthfa Retail Park
- 17 Rock UK Summit Centre
- 18 Theatr Soar
- 19 Aberfan and Merthyr Vale Community Centre
- 20 Trago
- 21 Merthyr Tydfil Football Club
- 22 Merthyr Tydfil Rugby Football Club

KEY	
	Areas of Interest
	Rivers
	National Park
	Trevithick Trail (Route 477)
	Main Roads
	Celtic Trail (Route 4)
	Taff Trail (Route 8)
	Heads of the Valley Trail (Route 46)
	Rail Line
	Train Station
	Bus Stop

Follow Visit Merthyr on Social Media:



/Visit Merthyr



@visitmerthyr



@visitmerthyr | #visitmerthyr

Looking for more?
visitmerthyr.co.uk

For further information contact us at:

Email: visit@merthyr.gov.uk

Phone: 01685 725000

Mail: Visit Merthyr, Merthyr Tydfil County Borough Council, Tourism Dept.
Civic Centre, Castle Street, Merthyr Tydfil CF47 8AN



Cyngor Bwrdeistref Siral
MERTHYR TYDFIL
MERTHYR TYDFIL
County Borough Council

Published by

The Strategic Tourism Team

Merthyr Tydfil County Borough Council

Design: **Mediadesign Wales**